

## Application Note


### Bluetooth Smart (BLE) ART Demo for iOS

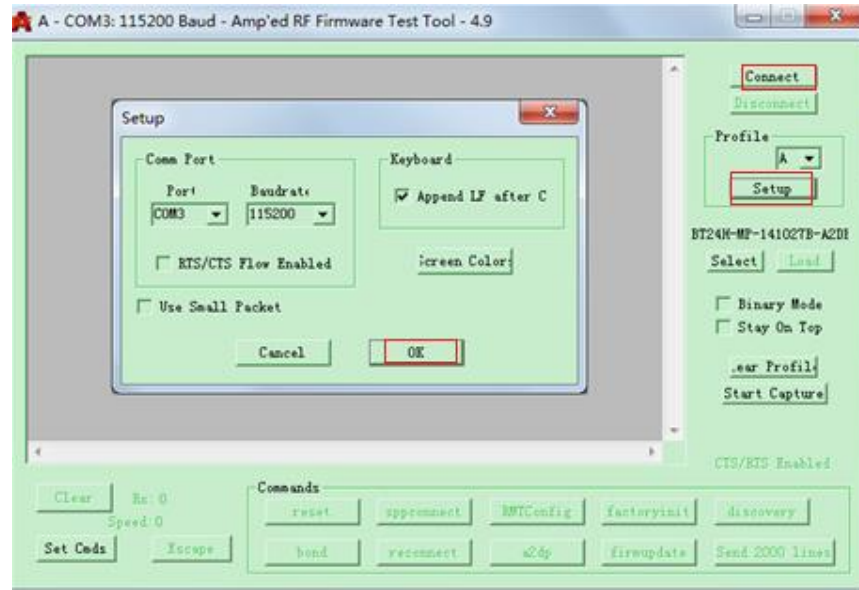
Bluetooth Low Energy is implemented on the iOS mobile platform as the Core Bluetooth Framework. Amped RF has developed a demo application to evaluate our platforms. <http://download.ampedrftech.com/apps/iOS/>

#### Connect from iOS device to Bluetooth module

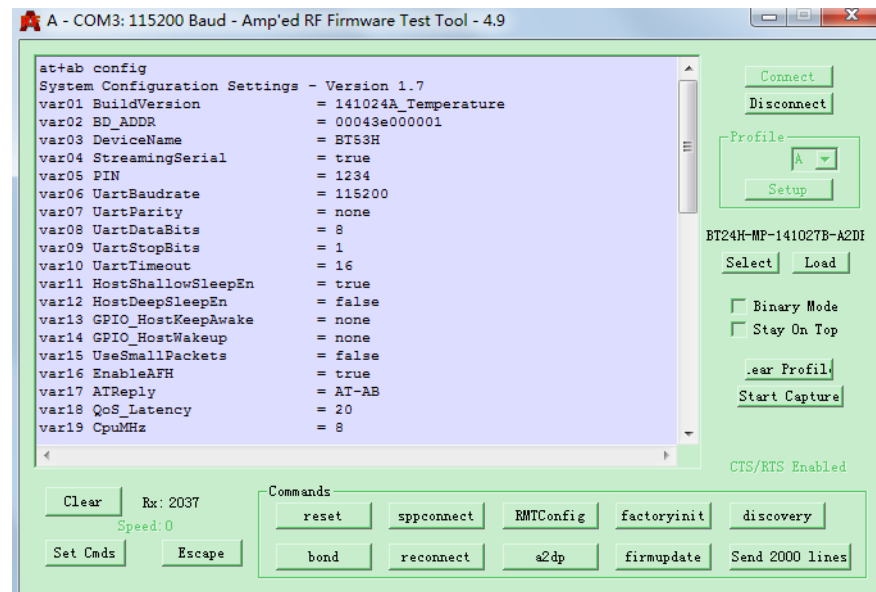
Step 1: Launch the evaluation terminal tool from ART



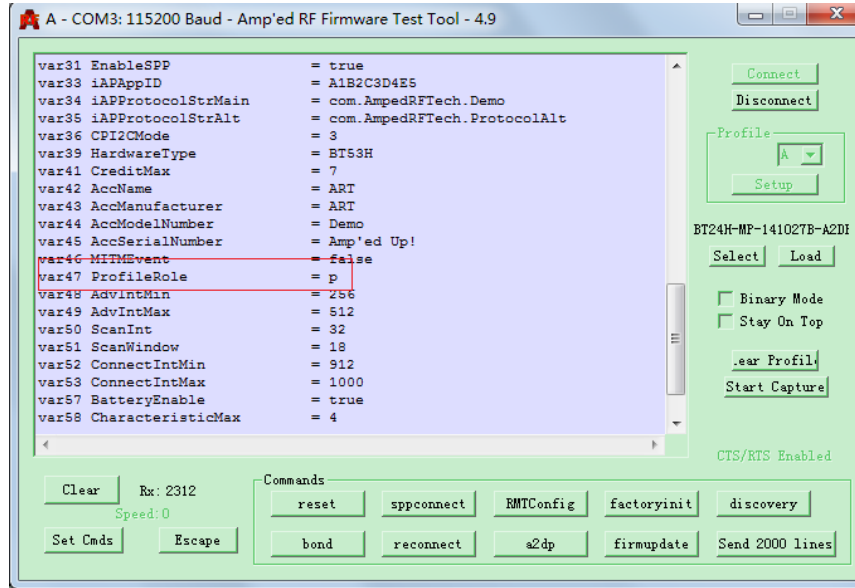
- Open the tools %Term+ 
- Click %Setup+
- Select the desired port
- Use the default baud rate of 115200
- Select %OK+
- Select %Connect+



Step 2: Send `at+ab config`, and confirm the module's configurations.



Step 3: Confirm ProfileRole=P.



Step 4: Establish BLE connection from the iOS device to the BT module

Settings/Bluetooth/ON, scan for nearby BT devices



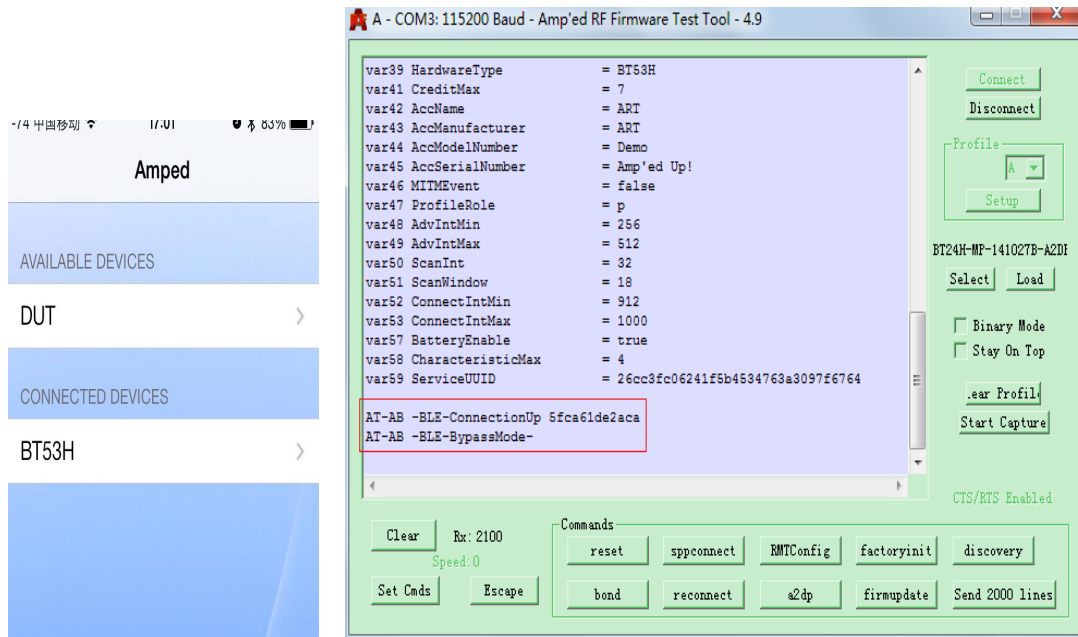
Step 5: Launch BLE ART Demo Application

Open CoreBluetooth, select the BT module to create the BLE connection.

Fast Track Your Wireless Project  
自由无线 放飞梦想



The iOS device will display %Connected device+and the module will go into bypass mode.

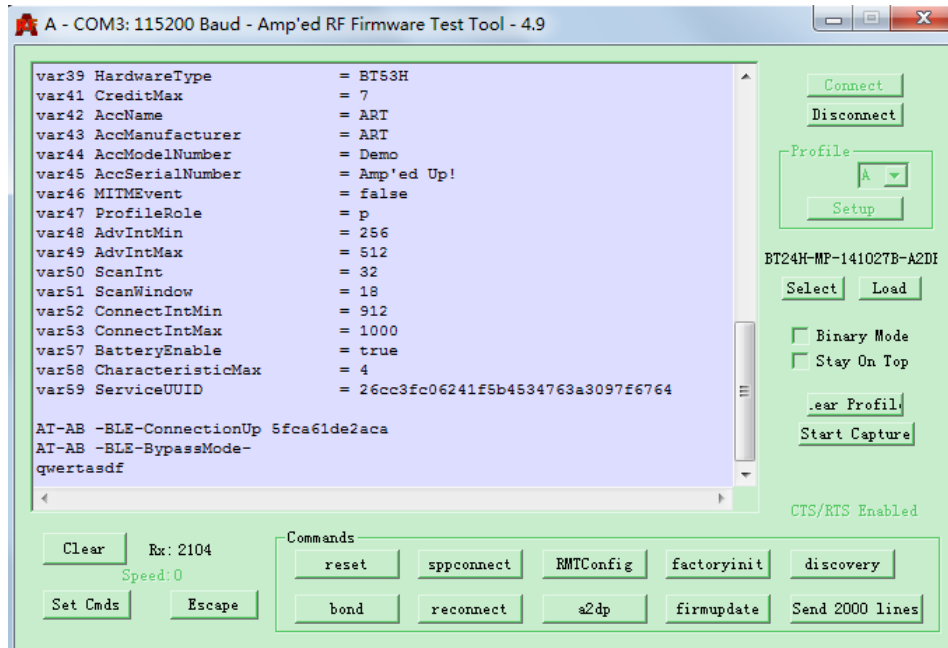
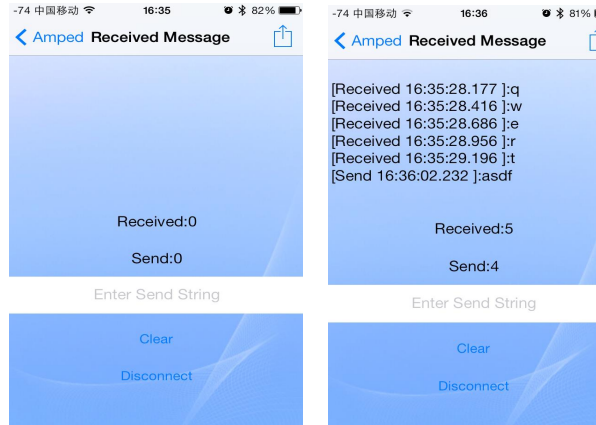


Select the BT device for the data exchange window. Send and receive data to/from the BT module as desired.

**Notes:**

- a. Data is sent to the iOS device using Notifications.
- b. Received data, from any form of Write (such as a characteristic update), is displayed when in bypass mode.

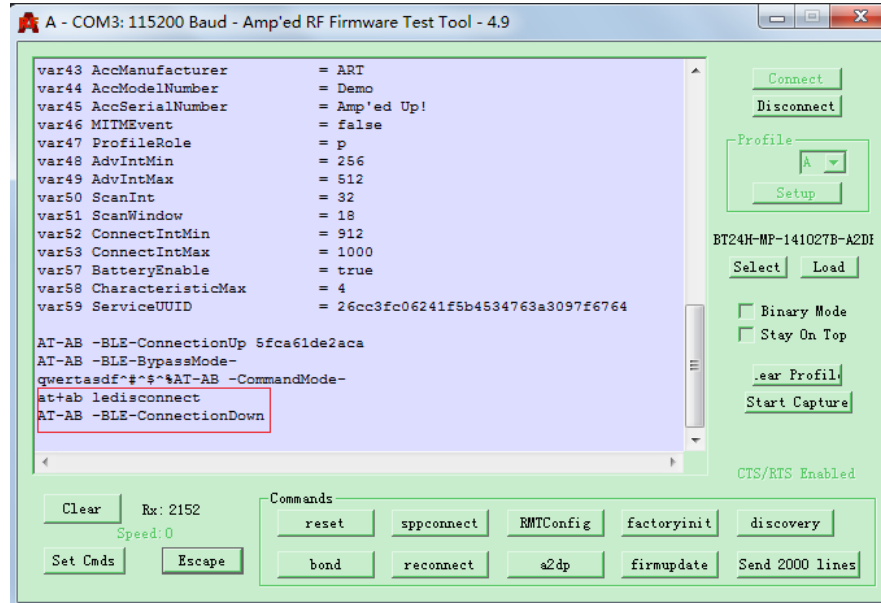
Fast Track Your Wireless Project  
自由无线 放飞梦想



### Step 6 Disconnect

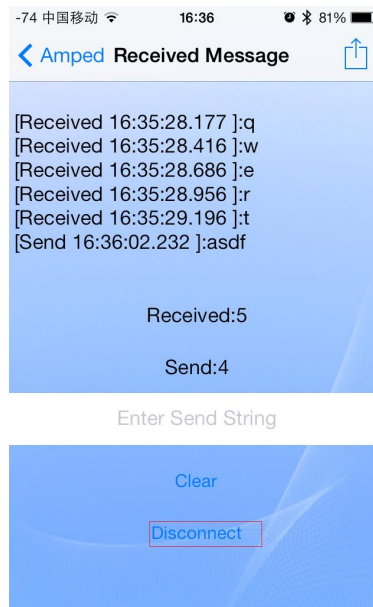
Disconnect by BT module:

- Use %Escape+ to switch from bypass mode to command mode
- Send %at+ab LeDisconnect+ to end the connection



Disconnect by iOS device:

Select the %Disconnect+ to end the BLE connection.



**Notes:**

After disconnecting, close the BLE demo. It must be closed before using again.